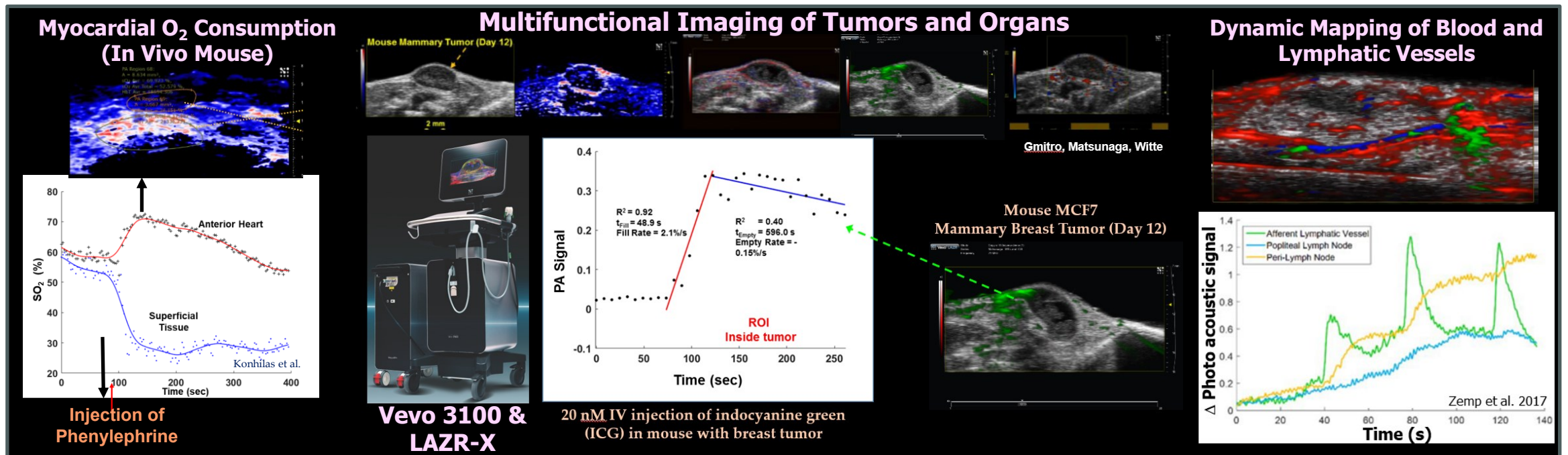


Advanced Ultrasound & Photoacoustic Imaging for Your Research

When/Where: Wed, March 20 at 1pm in MRB 102 (Interactive Seminar)

Who: Profs. Russell Witte and Terry Matsunaga on behalf of HFUS Core Team in BSRL

Why: Promote New Research Projects in Cardiac, Cardiovascular, Cancer Research and Beyond



- Mapping myocardial O₂ consumption
- Myocardial injury with microbubbles
- Vascular mapping of Vessels & Nodes
- Pharmokinetics and Perfusion
- Multifunctional imaging of tumors
- Drug Discovery
- Smart contrast agents, nanotechnology
- Molecular biology

contact: rwitte@arizona.edu